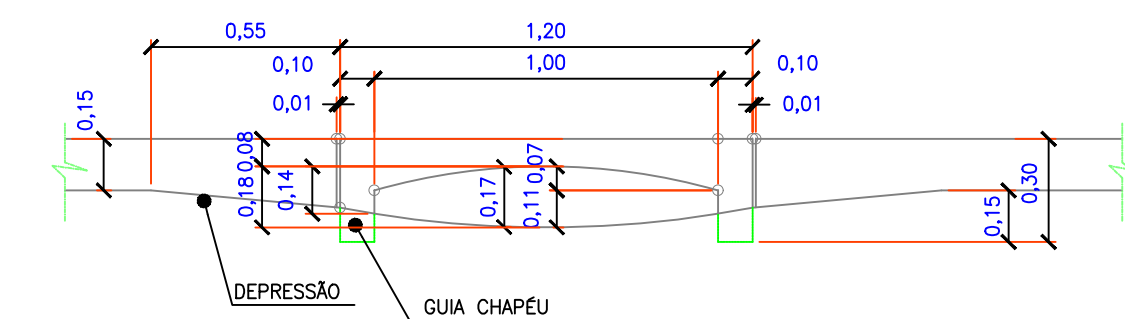
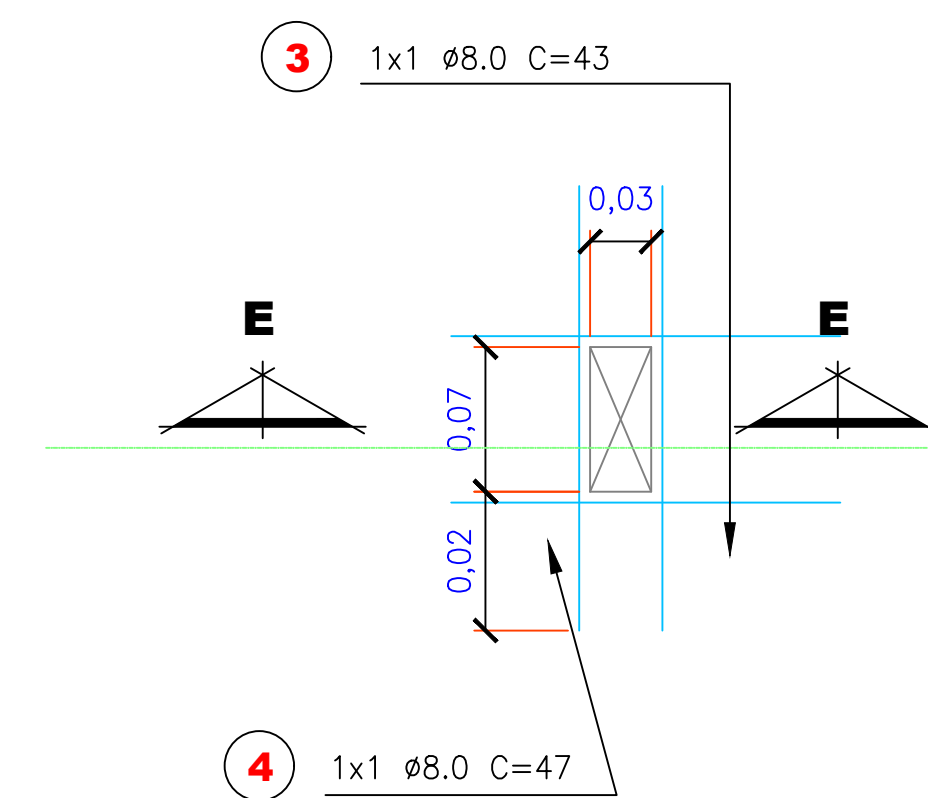


Planta em Corte
Poço de Visita

1. MEDIDAS EM METROS, EXCETO ONDE INDICADO.
2. CONFERIR MEDIDAS NA OBRA
3. CONCRETO ESTRUTURAL - $f_{ck} > 15\text{MPa}$
4. CONCRETO MAGRO - $f_{ck} > 8\text{MPa}$
5. AÇO CA - 50A
6. RECOBRIMENTO = 2,5cm
7. REVESTIMENTO INTERNO E ENCHIMENTO DO FUNDO DA CAIXA DE PASSAGEM COM ARGAMASSA DE CIMENTO E AREIA TRACO 1:3
8. VERIFICAR DIÂMETRO E MATERIAL DOS TUBOS NO PROJETO EXECUTIVO DA REDE.
9. TUBOS AFILANTES E EFICIENTES PODERÃO SER USADOS A QUALQUER LUM DOS LADOS DA CAIXA DE PASSAGEM, BEM COMO TER DIREÇÕES VARIÁVEIS CONFORME AS NECESSIDADES

[illegible]**Corte BB**

Reforço nos furos



Diagram illustrating a 5x6.3 corridor layout. The layout shows a central corridor (5) with dimensions 0.20 and 0.13. To the right, there are two smaller corridors (6) with dimensions 0.20 and 0.14. The layout is labeled 5x6.3 CORRIDOS.

12	9
8	15

$13 + (2 \times 4) \times 6.3 \text{ C/20}$
 $C = 70 \text{ (DUPLA)}$

Corte EE

The image displays technical drawings for a reinforced concrete slab, labeled "Corte FF".

Plan View (Top): Shows the overall dimensions of the slab. The total width is 80 units. The reinforcement is specified as 1ø6.3 C=126. The slab is supported by walls on three sides. Dimensions 23, 10, 13, 14, and 15 are indicated for specific reinforcement details.

Section View (Bottom): Shows the cross-section of the slab. The total thickness is 16 units. The reinforcement is specified as 2ø6.3 C=112. The slab is supported by walls on three sides. Dimensions 16, 11, 12, 13, 14, and 15 are indicated for specific reinforcement details.

Reinforcement Details: The drawings show the placement of reinforcement bars (ø6.3) and the spacing (C) between them. The reinforcement is shown in both plan and section views.

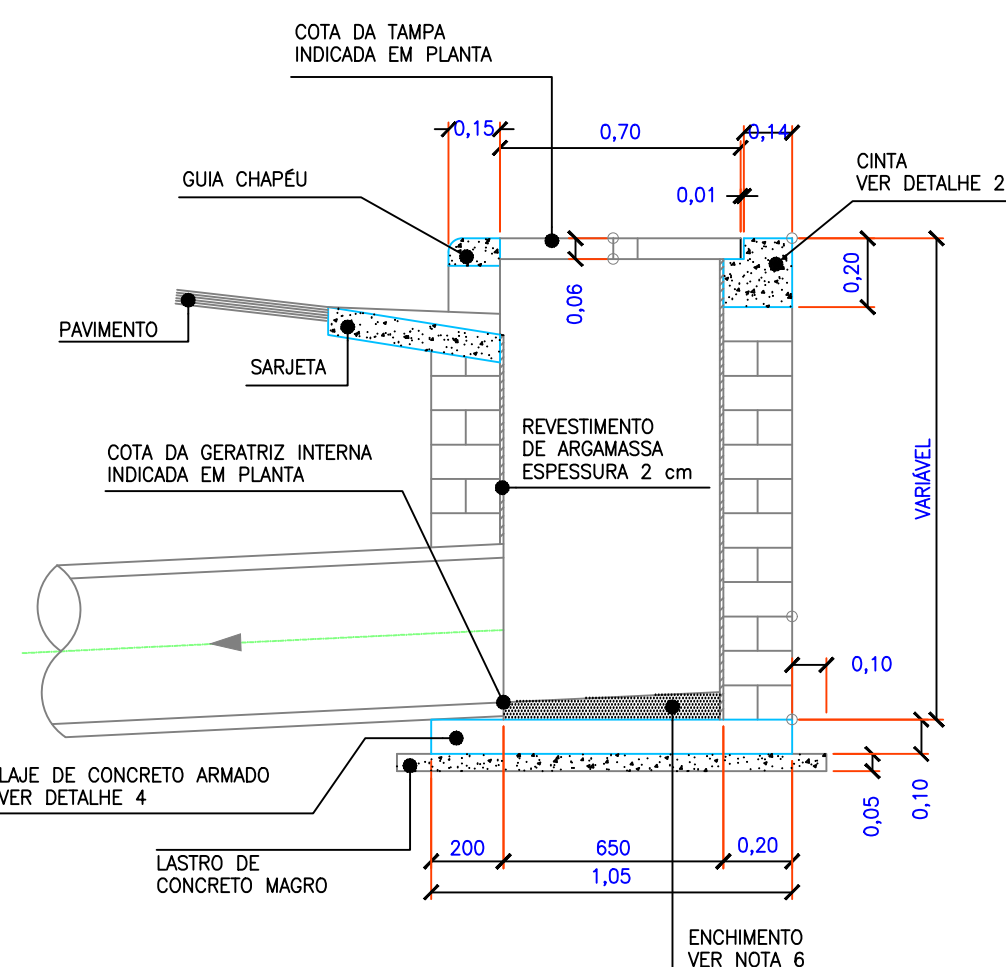
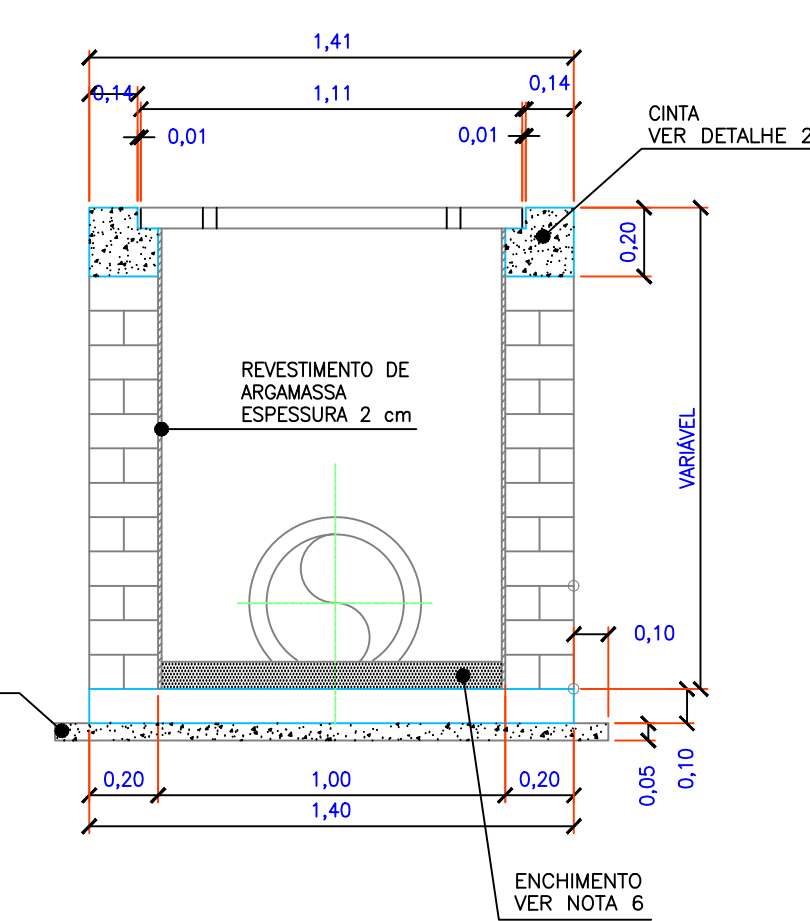
Dimensions: The dimensions are given in units. The overall width is 80 units. The total thickness is 16 units. The reinforcement spacing is 126 units (C=126) in the plan view and 112 units (C=112) in the section view.

Labels: The drawings are labeled "Corte FF".

[illegible]

Detalhe 3

Armação da viga da tampa

**Corte BB**

- | LEGENDA: | |
|---|----------------------------|
|  | RUA DE TERRA |
|  | RUA PAVIMENTADA |
|  | RUA PROJETADA |
|  | CURSO D'ÁGUA |
|  | SENTIDO DA ÁGUA |
|  | DISSIPADOR EXISTENTE |
|  | DISSIPADOR A CONSTRUIR |
|  | DISSIPADOR A SUBSTITUIR |
|  | PV EXISTENTE |
|  | PV A CONSTRUIR |
|  | PV A SUBSTITUIR |
|  | BOCA DE LOBO EXISTENTE |
|  | BOCA DE LOBO A CONSTRUIR |
|  | BOCA DE LOBO A SUBSTITUIR |
|  | BOCA DE LEÃO EXISTENTE |
|  | CAXA DE PASSAGEM EXISTENTE |
|  | GALERIA EXISTENTE |
|  | GALERIA A CONSTRUIR |
|  | GALERIA A SUBSTITUIR |
|  | SARJETÃO EXISTENTE |
|  | SARJETÃO A CONSTRUIR |

OBRA: CONSTRUÇÃO DE GALERIA PLUVIAL
LOCAL: RUA LUIZ ANTÔNIO PELISSARI

PROP.: PREFEITURA MUNICIPAL DE IBIRAREMA

An aerial photograph of a residential street with a grid of houses. A thick red horizontal line is drawn across the middle of the image, intersecting a street. The houses have orange-tiled roofs, and there are green trees and lawns. The red line is positioned between two rows of houses, likely indicating a specific location or boundary.

PREFEITURA MUNICIPAL DE IBIRAREMA
CNPJ: 44.543.981/0001-99

ENG. CIVIL JÉSSICA GOMES DA COSTA
CREA/SP 5070149137

DATA: 25/08/2022

ESCALA:
Como indicado

FOLHA: