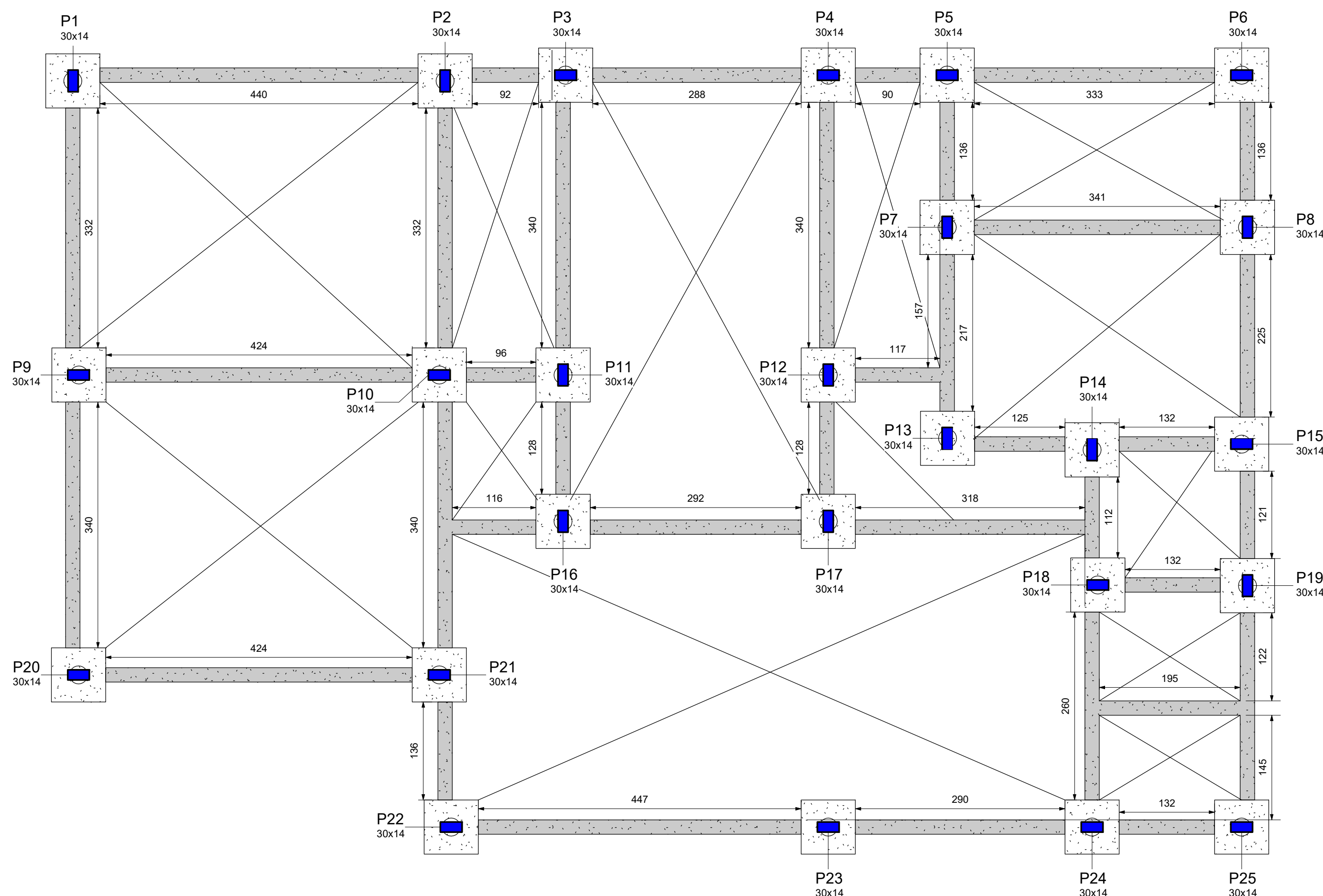


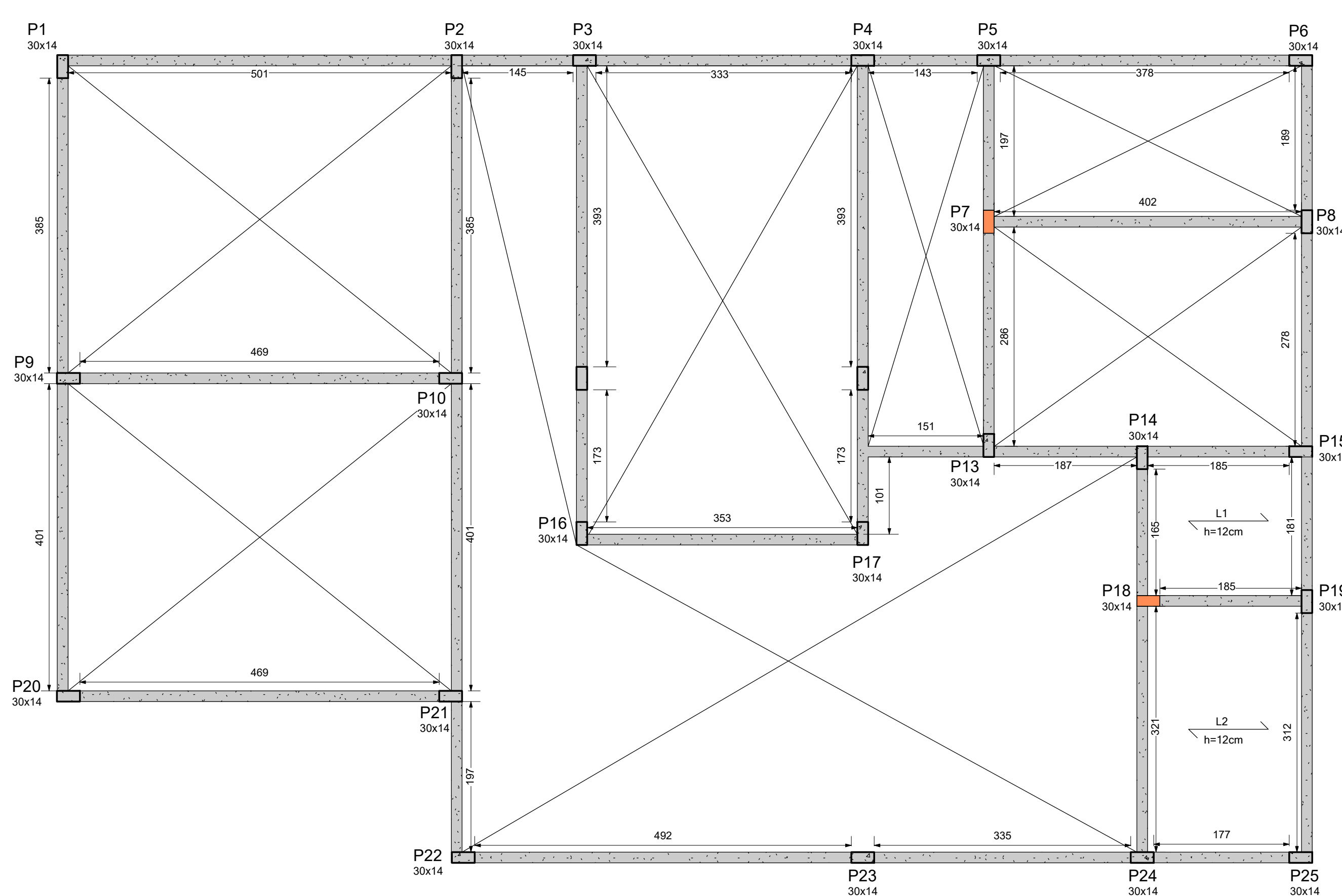
1 FORMAS VIGAS BALDRAME

1 : 50



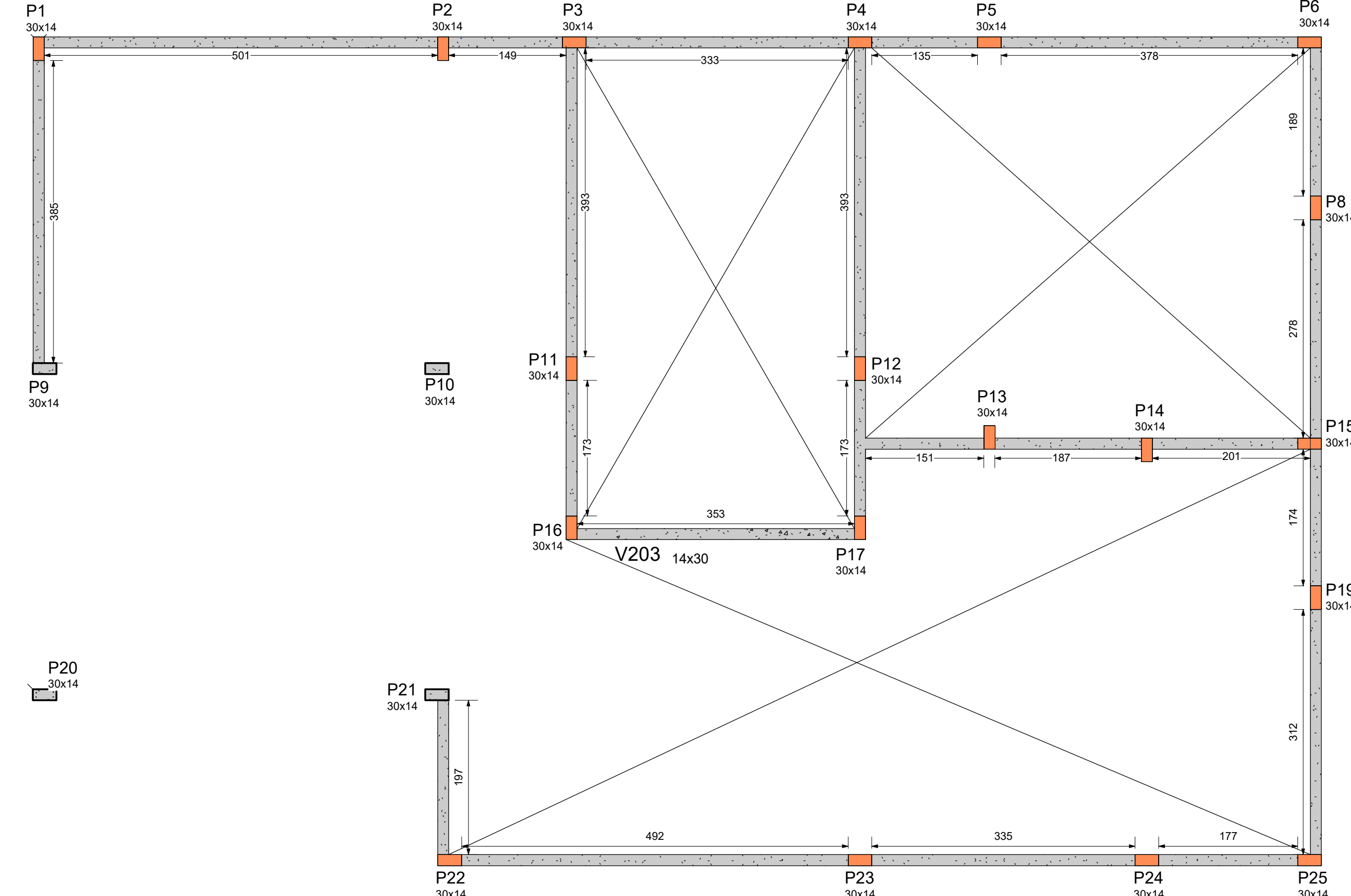
2 FORMAS VIGAS COBERTURA

1 : 50



3 FORMAS PLATIBANDA GERAL

1 : 50



LEGENDA PILARES:

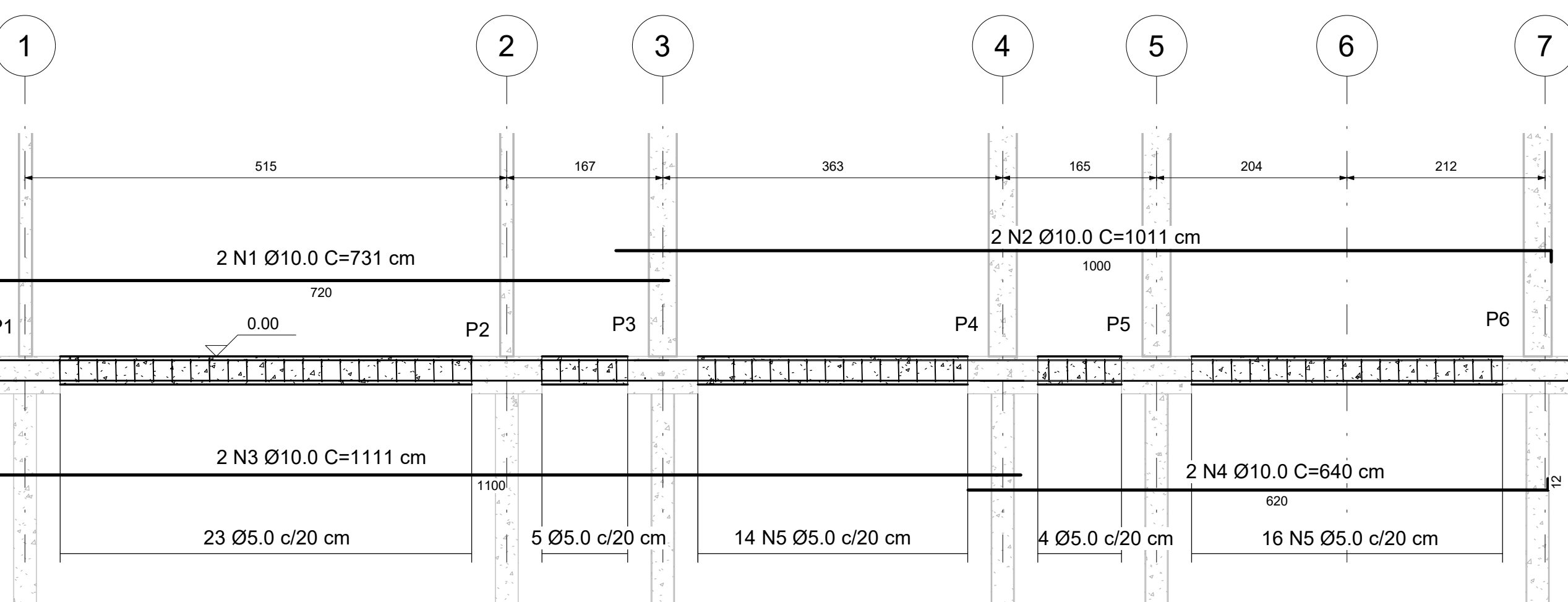
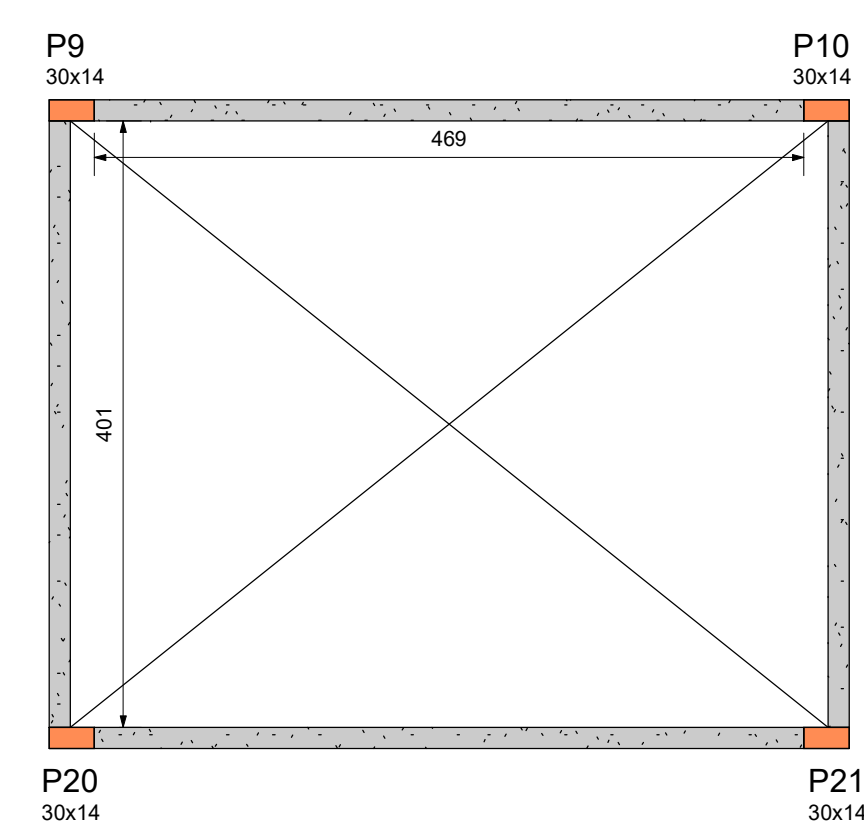
4 FORMAS PLATIBANDA SUPERIOR

1 : 50

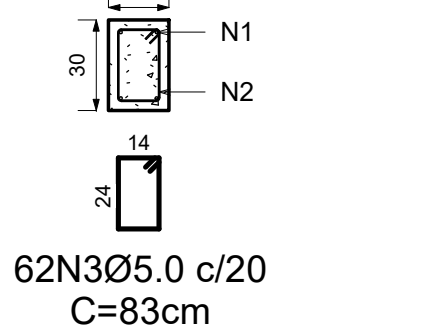
DETALHAMENTO VIGAS BALDRAME

VB1 (20x30)

1 : 50

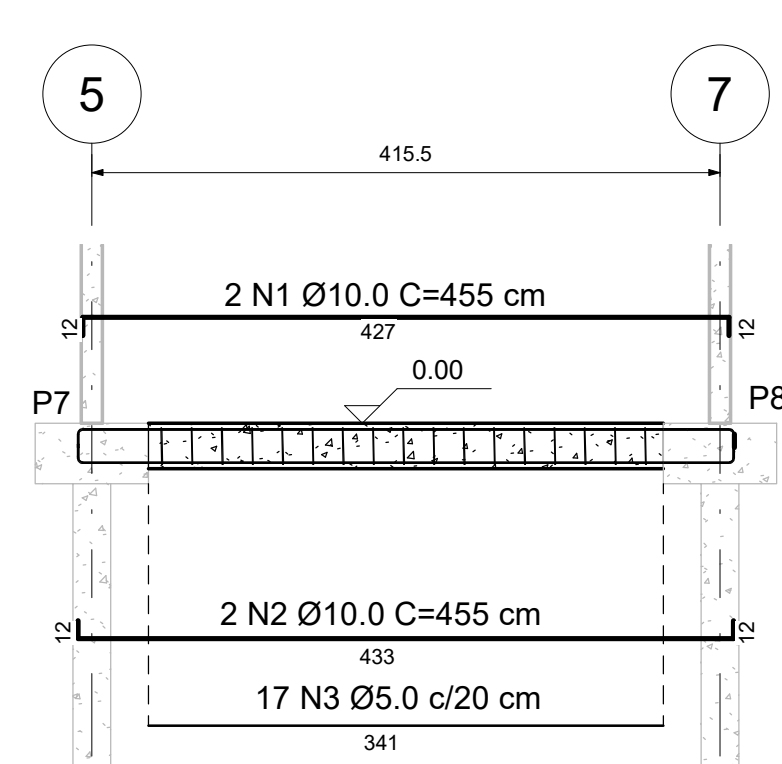


SEÇÃO TRANSVERSAL
esc. 1:25

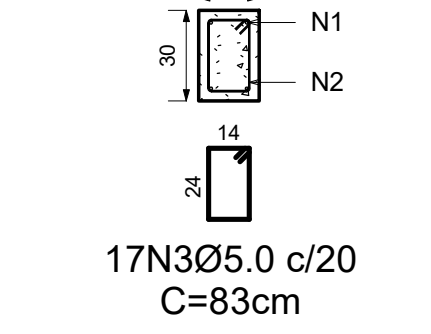


VB2 (20x30)

1 : 50

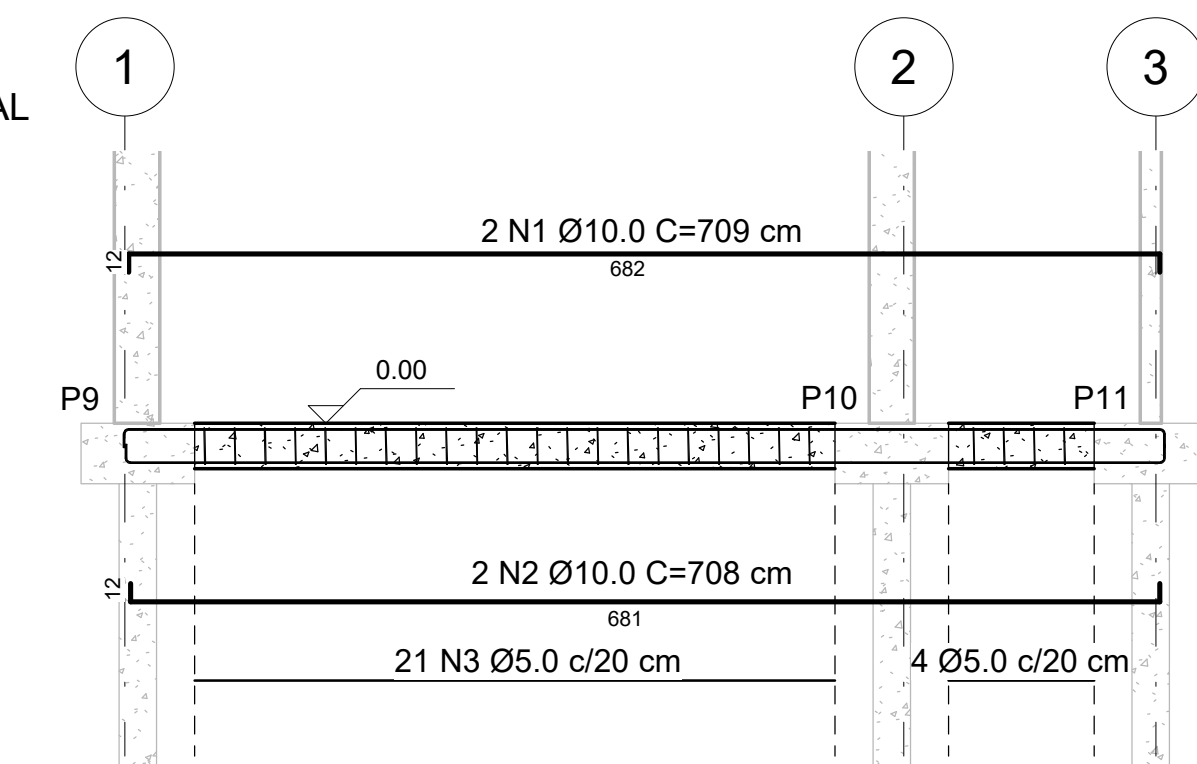


SEÇÃO TRANSVERSAL
esc. 1:25

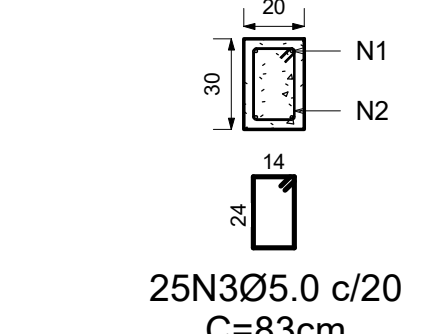


VB3 (20x30)

1 : 50

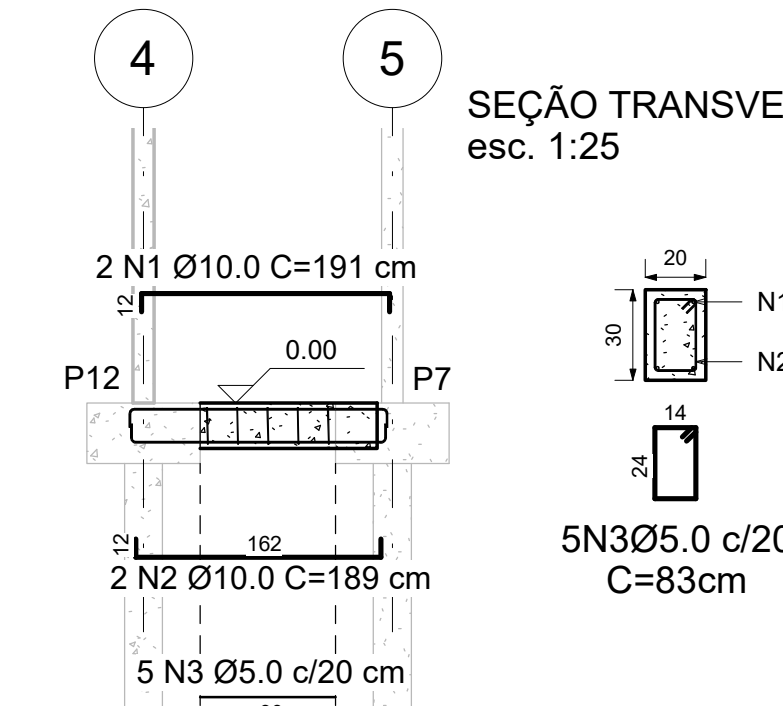


SEÇÃO TRANSVERSAL
esc. 1:25

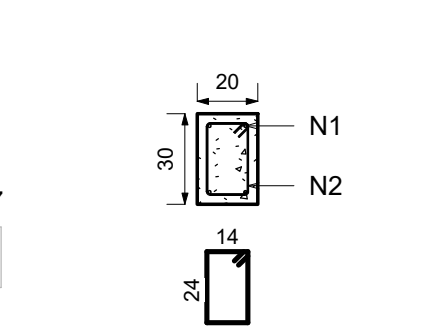


VB4 (20x30)

1 : 50

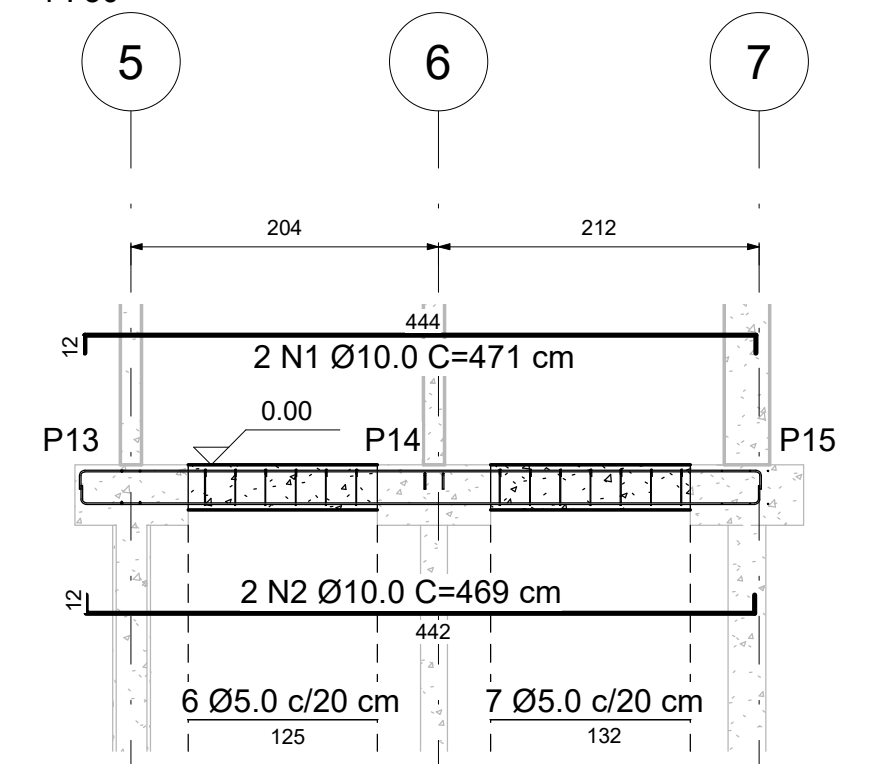


SEÇÃO TRANSVERSAL
esc. 1:25

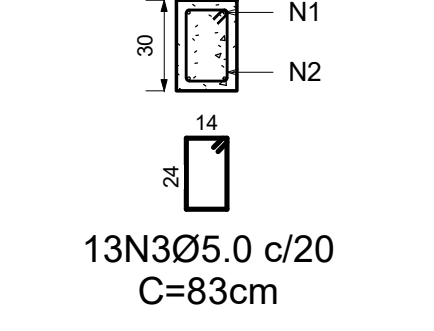


VB5 (20x30)

1 : 50

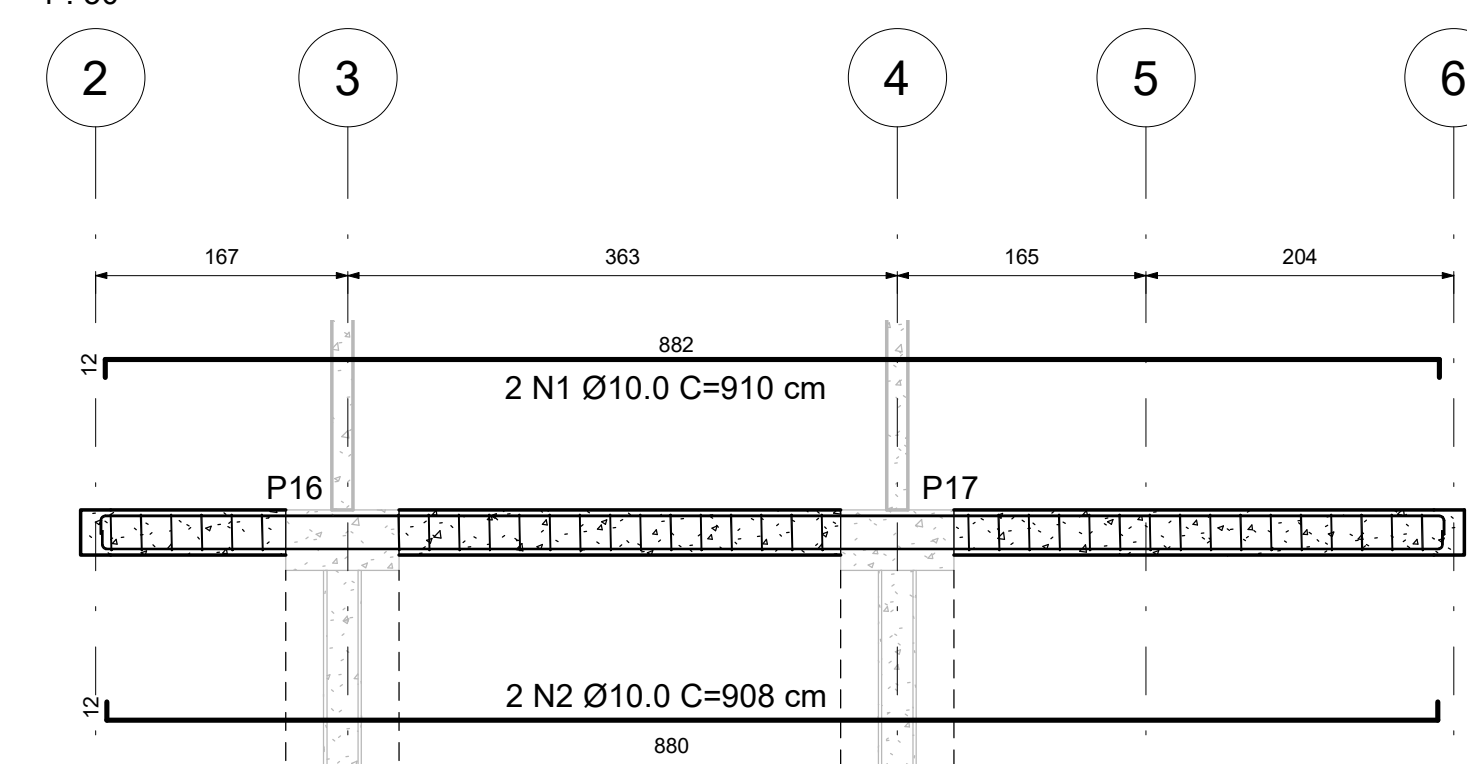


SEÇÃO TRANSVERSAL
esc. 1:25

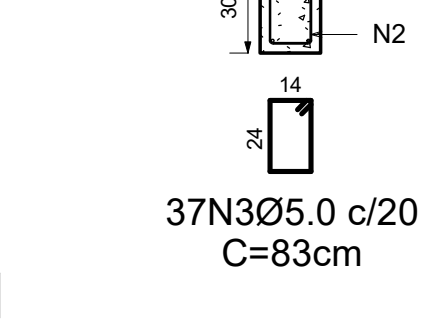


VB6 (20x30)

1 : 50

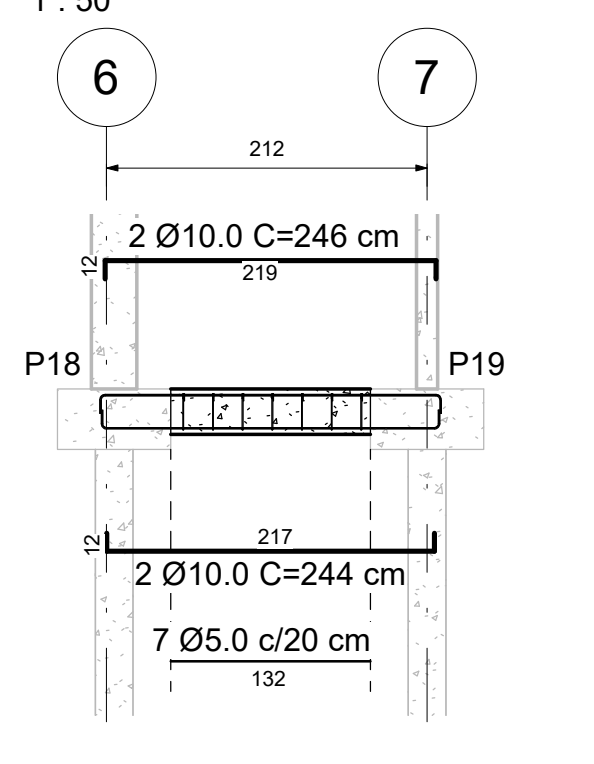


SEÇÃO TRANSVERSAL
esc. 1:25

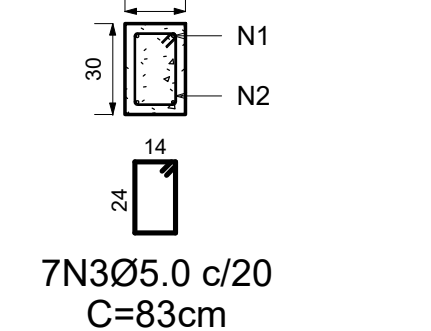


VB7 (20x30)

1 : 50

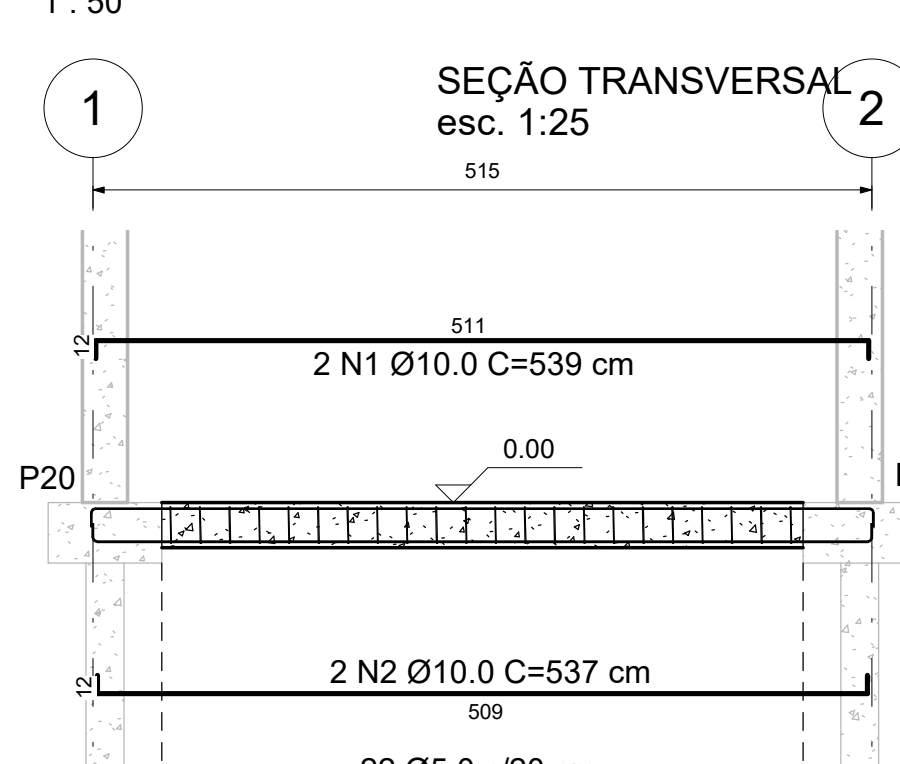


SEÇÃO TRANSVERSAL
esc. 1:25

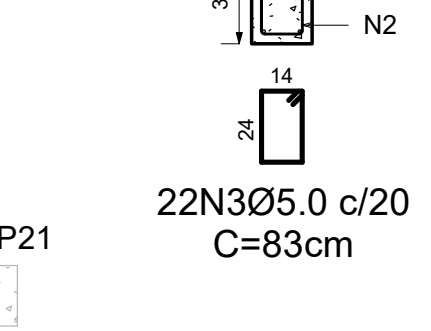


VB8 (20x30)

1 : 50

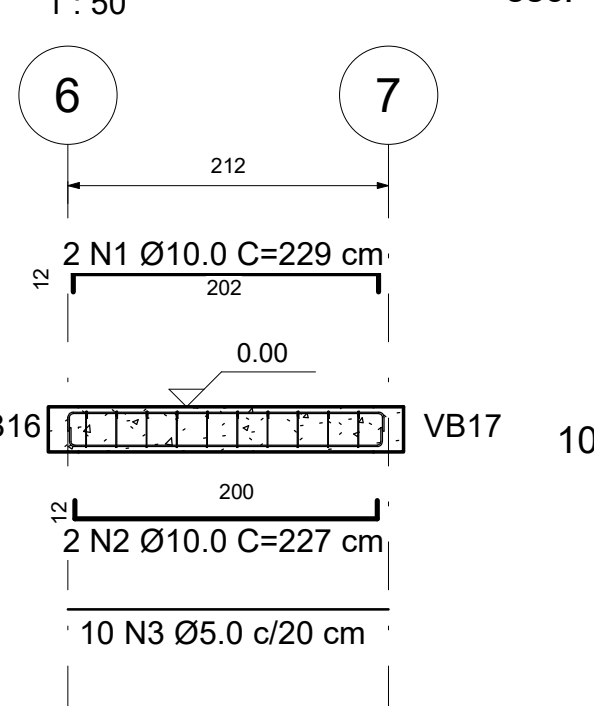


SEÇÃO TRANSVERSAL
esc. 1:25

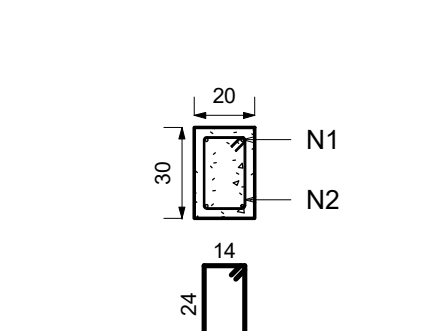


VB9 (20x30)

1 : 50

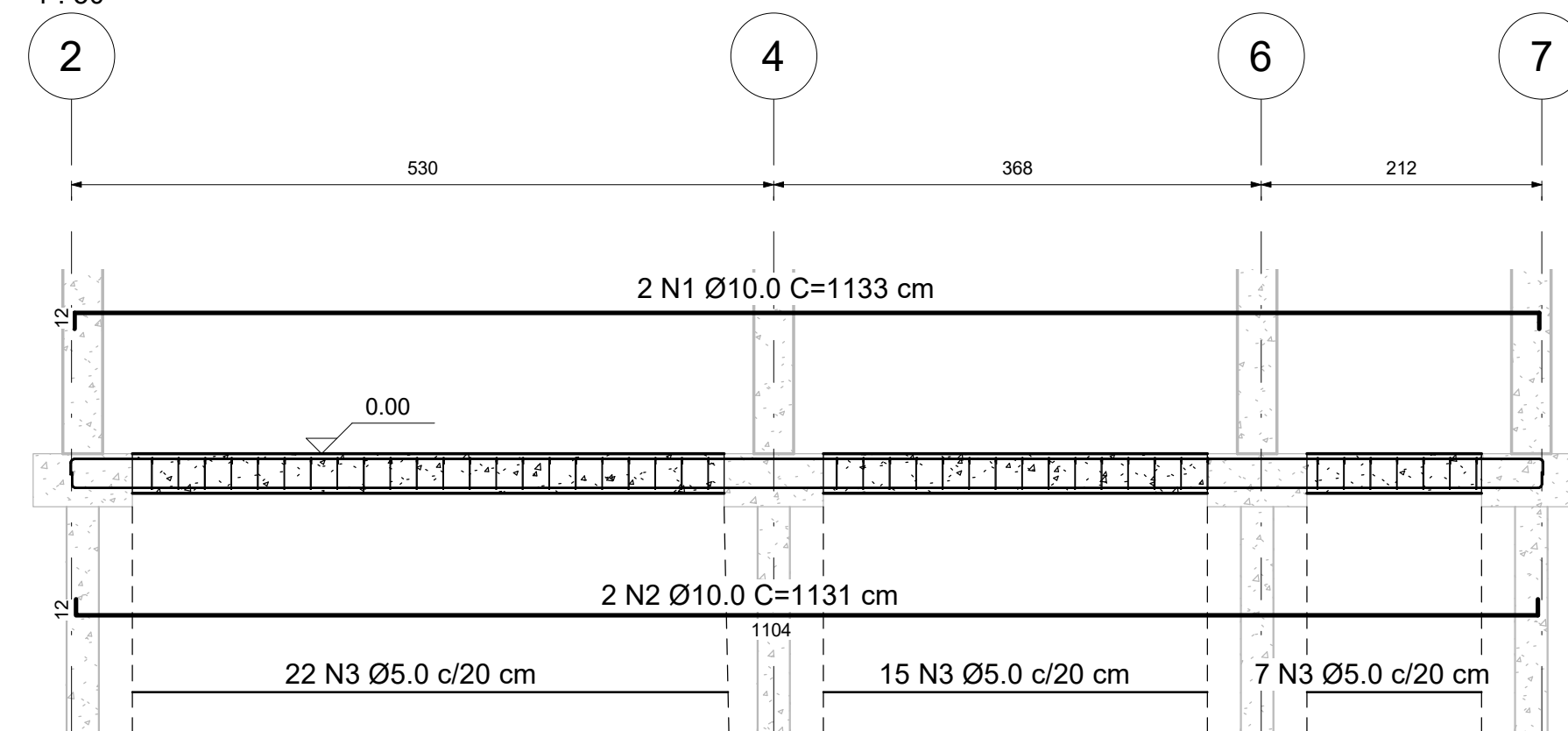


SEÇÃO TRANSVERSAL
esc. 1:25

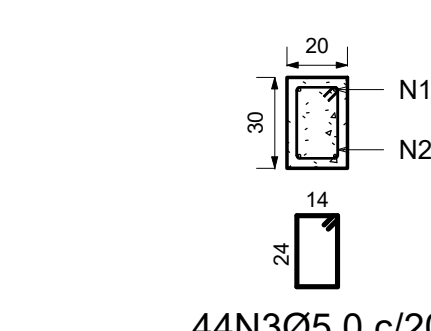


VB10 (20x30)

1 : 50

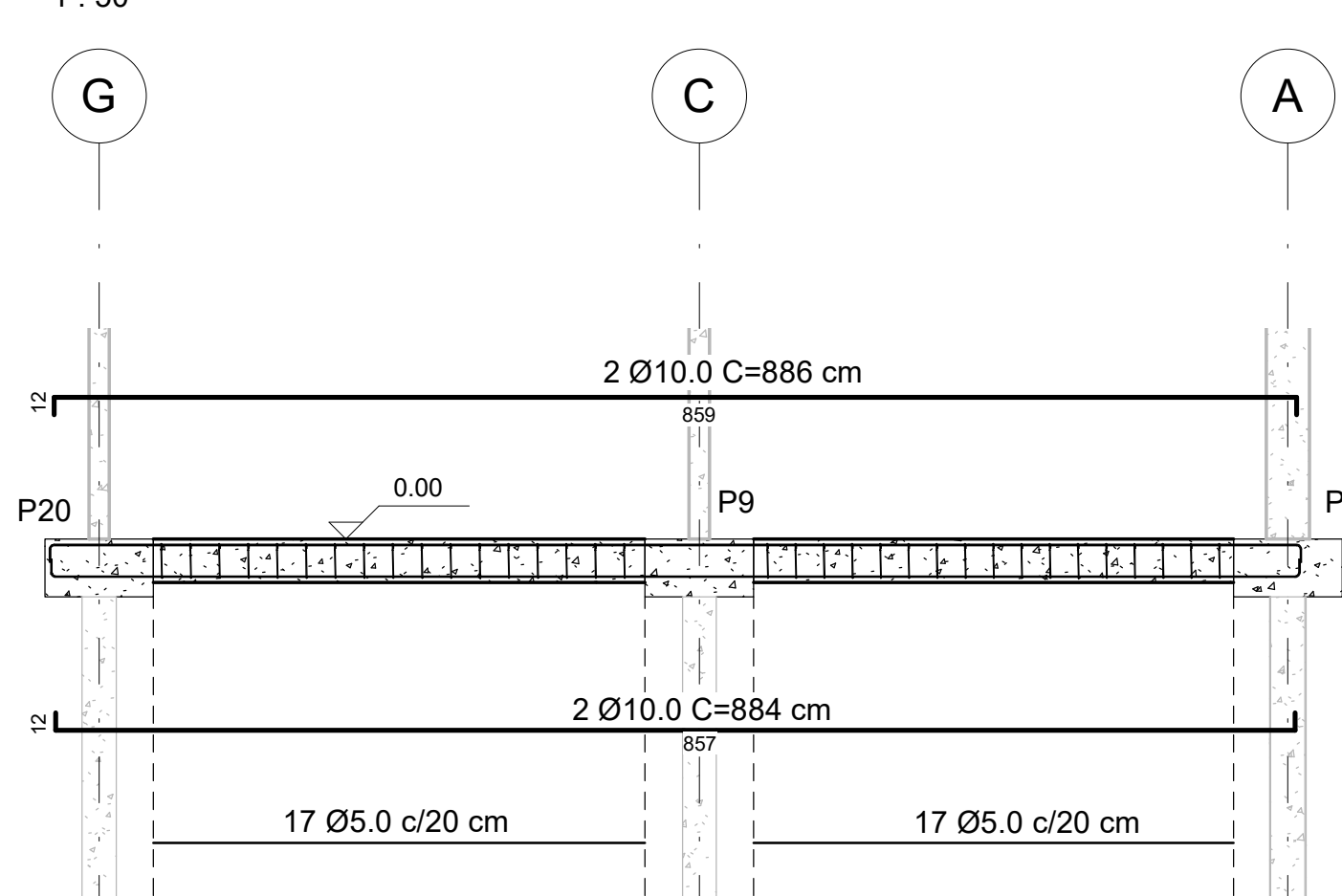


SEÇÃO TRANSVERSAL
esc. 1:25

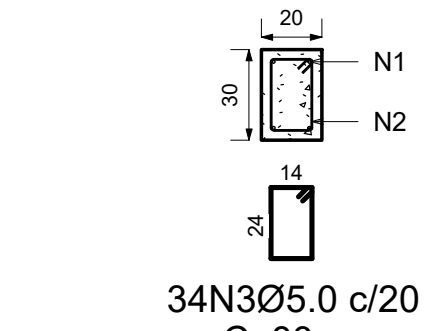


VB11 (20x30)

1 : 50

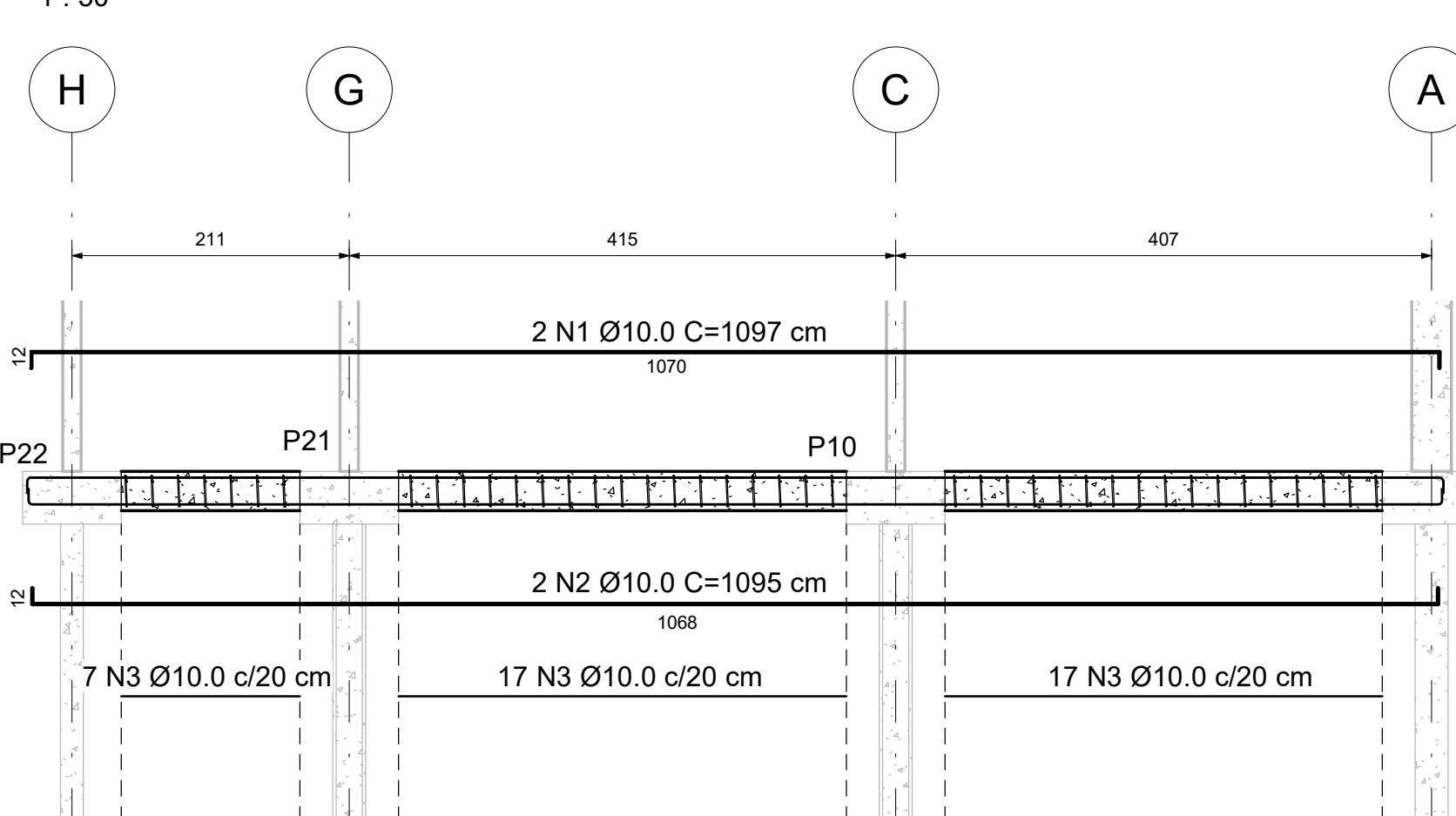


SEÇÃO TRANSVERSAL
esc. 1:25

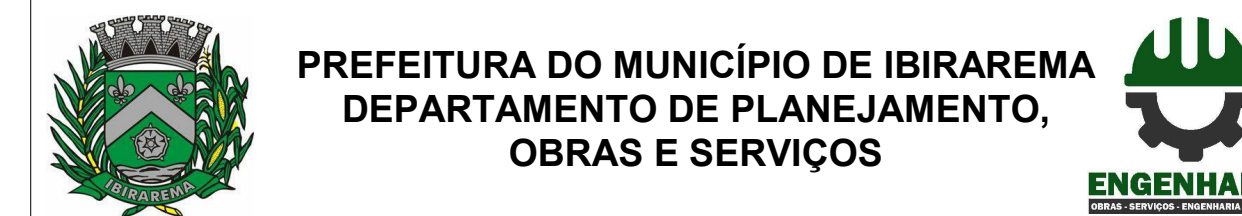
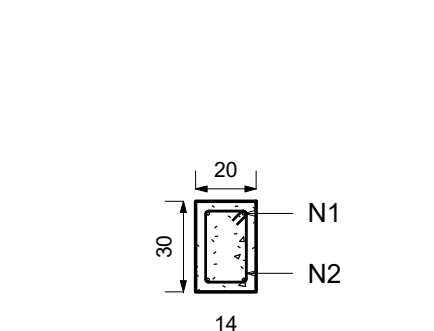


VB12 (20x30)

1 : 50



SEÇÃO TRANSVERSAL
esc. 1:25

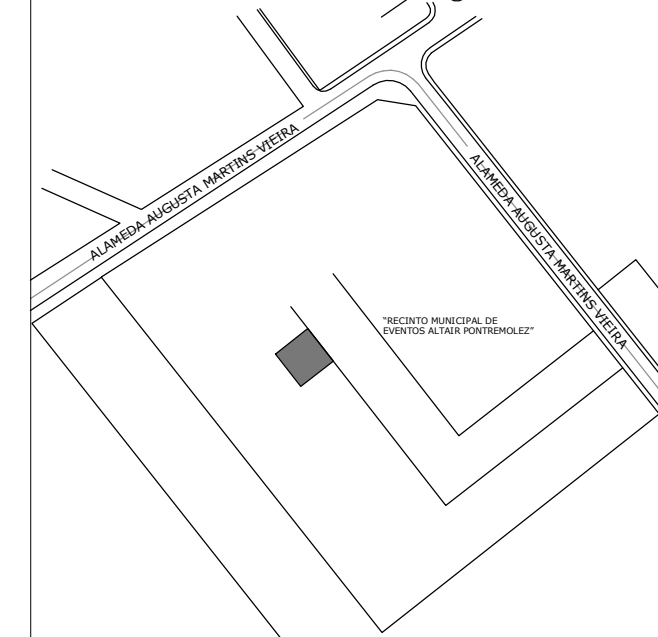


TÍTULO: ESCRITÓRIO ARPT, CULTURA E TURISMO

ENDEREÇO: AUGUSTA MARTINS VIEIRA, 02

MUNICÍPIO: IBIRAREMA / SP

PLANTA DE SITUAÇÃO



JOSE BENEDITO CAMACHO
PREFEITO MUNICIPAL

ENG. FELIPE COSTA
CREA/SP: 50704/99026
ART. Nº 2807/2001-1545879

PREFEITURA MUNICIPAL DE IBIRAREMA

Secretaria de Obras do Município de Ibirarema
O presente projeto foi devidamente
APROVADO
pela Secretaria de Obras nos termos da Lei
de Ibirarema nº 1.300 / 11 / 2021
ENG. REINALDO A. SILVA FILHO
CREA/SP: 56692/2000

DATA: 29/11/2021

ESCALA: Como indicado

FOLHA: 5 / 9